

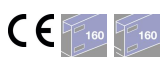
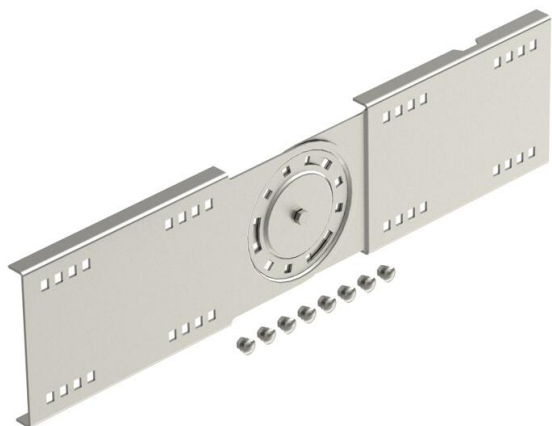
Technical data sheet

Adjustable connector A2

Item number: 6227965



Adjustable connector for wide span cable trays and ladders with a side height of 160 mm.
Including appropriate bolts, washers and nuts.



A2 Stainless steel

2B Bright, treated

Master data

Item number	6227965
Type	WRGV 160 A2
Description 1	Adjustable connector
Description 2	for wide span system 160
Manufacturer	OBO
Dimension	160x680
Material	Stainless steel
Surface	Bright, treated
Surface standard	
Smallest sales unit	2
Unit of quantity	Piece
Weight	300.2 kg
Weight unit	kg/100 pc.

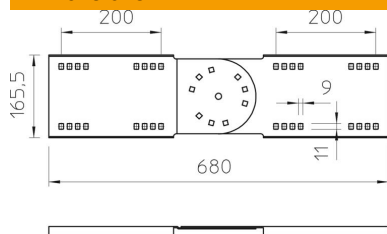
Technical data sheet

Adjustable connector A2

Item number: 6227965



Dimensions



Length	680 mm
Width	20 mm
Height	160 mm
Plate thickness	2.5 mm

Technical data

Version for	Straight connector
Maintain electrical functions	no
Suitable for mesh cable tray	no
Suitable for cable ladder	yes
Suitable for cable tray	yes
Suitable for cable tray system height	160 mm
Adjustable connector, horizontal	no
Articulated connector, vertical	yes
Rustproof steel, pickled	no
Connection type	Screw connector