

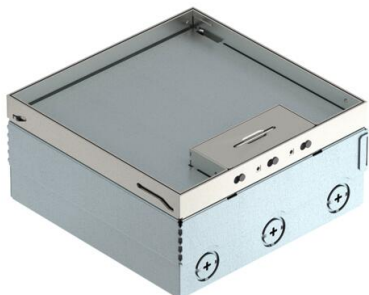
Technical data sheet

UDHOME4 floor box, with universal support UT3, triple VDE, stainless steel
Item number: 7427200



Square floor box for use in dry-cleaned cavity and screed floors in indoor areas. Installation housing with pre-marked insertion openings for pipes (M25). With two UT3 universal supports and a triple socket. Cover adjustable to top edge of floor covering using four height-adjustment supports. The minimum installation depth is 95 mm, the height-adjustment range + 30 mm. The scope of delivery contains two UT3 universal supports, a triple power socket with cover plate and two individual cover plates for accessories with support ring.

Surfaces visible in the floor covering made of stainless steel.



A2 Stainless steel

Master data

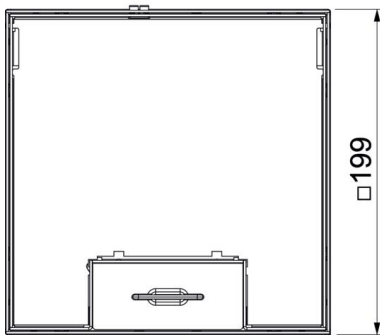
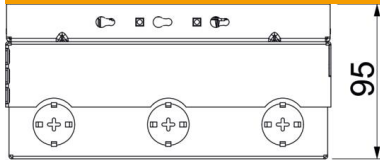
| | |
|---------------------|---------------------|
| Item number | 7427200 |
| Type | UDHOME4 2V V |
| Description 1 | Floor box, complete |
| Description 2 | triple VDE socket |
| Manufacturer | OBO |
| Material | Stainless steel |
| Smallest sales unit | 1 |
| Unit of quantity | Piece |
| Weight | 380 kg |
| Weight unit | kg/100 pc. |

Technical data sheet

UDHOME4 floor box, with universal support UT3, triple VDE, stainless steel
Item number: 7427200



Dimensions



| | |
|--------|--------|
| Length | 202 mm |
| Width | 202 mm |

Technical data

| | |
|--|--------------------------|
| Number of mounting boxes | 2 |
| Version for | Square |
| Cable outlet version | Swivellable cord outlet |
| Equipment | 2 UT3, triple VDE socket |
| Floor covering protection frame | no |
| Cover version | Floor covering recess |
| Screed height, max. | 110 mm |
| Screed height, min. | 95 mm |
| Floor height, max. | 125 mm |
| Floor height, min. | 95 mm |
| Suitable for raised floor installation | no |
| Suitable for cavity floor installation | yes |
| Suitable for wet care | no |
| Suitable for underfloor ducts | no |
| Length of external dimensions | 199 mm |
| Length of installation dimensions | 202 mm |
| With floor covering recess | yes |
| Height-adjustment range, max. | 125 mm |
| Height-adjustment range, min. | 95 mm |
| Protection rating (IP) when used | IP20 |
| Protection rating (IP) when unused | IP40 |
| Protection rating IK code | IK10 |
| Opening mechanism | Handle |
| Floor covering thickness | 15 mm |