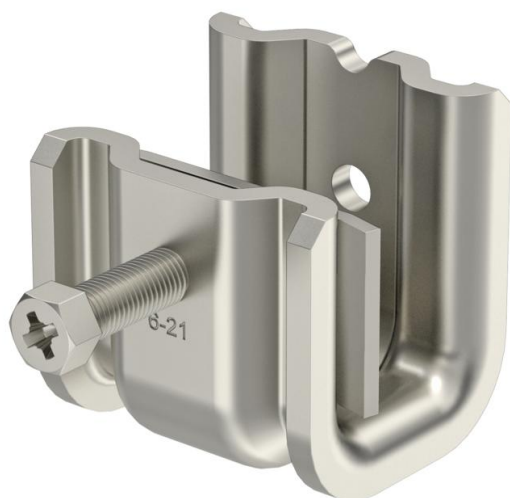


Technical data sheet

Beam clamp SSP 6-21, VA M6

Item number: 1486236



This type of beam clamp is pushed onto the support and fixed to the girder or flat iron using a pressure trough and bolt (M8). The hexagonal bolt has a WAF of 10 mm. In the clip element, two additional M6 threads are also incorporated, to fix threaded rods, for example.

CE

A4 Stainless steel

2B Bright, treated

Master data

Item number	1486236
Type	SSP 6-21 M6 A4
Description 1	Beam clamp
Description 2	heavyweight design
Manufacturer	OBO
Dimension	6-21mm
Material	Stainless steel
Surface	Bright, treated
Surface standard	
Smallest sales unit	25
Unit of quantity	Piece
Weight	23.2 kg
Weight unit	kg/100 pc.

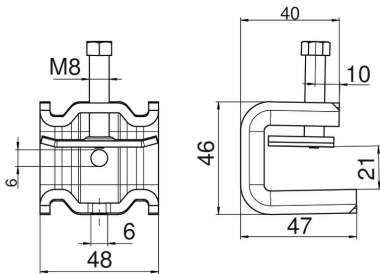
Technical data sheet

Beam clamp SSP 6-21, VA M6

Item number: 1486236



Dimensions



Dimension B	48 mm
Dimension H	46 mm
Dimension L	47 mm

Technical data

Connection type/component	Thread
Fastening type	Clamp
Breaking load F1	1.75 kN
Breaking load F2	1.5 kN
Flange thickness F max.	21 mm
Flange thickness F min.	6 mm
Suitable for metric threaded rod	6
Thread	M8
Thread metric	8
Hinge, adjustable	no
Hinged	no