

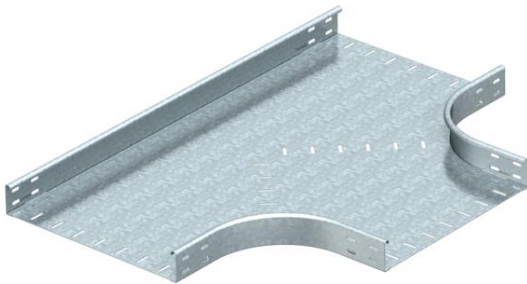
# Technical data sheet

## T branch piece 60 FT

Item number: 7117604



Horizontal T branch piece, for all cable tray types of 60 mm side height.  
Fitting in round design. The interior radius of the fitting is 150 mm. All the sides are designed for the same cable tray width.  
Fastening materials should be ordered separately.



**St** Steel

**FT** Hot-dip galvanised

### Master data

Item number	7117604
Type	RT 660 FT
Description 1	T-branch piece
Description 2	horizontal, round type
Manufacturer	OBO
Dimension	60x600
Material	Steel
Surface	Hot-dip galvanised
Surface standard	DIN EN ISO 1461
Smallest sales unit	1
Unit of quantity	Piece
Weight	1001.7 kg
Weight unit	kg/100 pc.

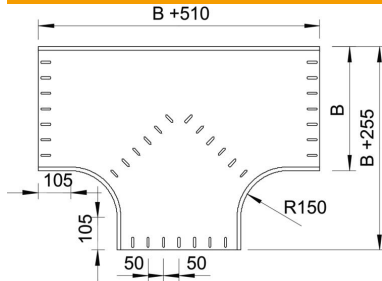
# Technical data sheet

## T branch piece 60 FT

Item number: 7117604



### Dimensions



Width	600 mm
Width	24 in
Height	60 mm
Dimension B	600 mm
Dimension R	150 mm

### Technical data

Bend (angle)	90°
Connector version	Without connectors
Maintain electrical functions	no
NATO hole pattern	no
Change of direction	Horizontal
Rustproof steel, pickled	no
Wide-span version	no
Type of connector, cable support system	Screwed
Rail thickness	1.25 mm