

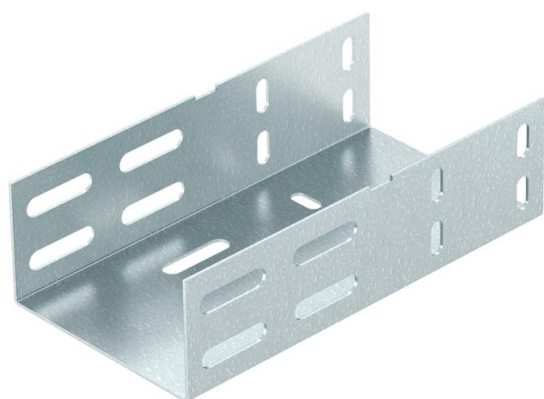
Technical data sheet

Connector for expansion compensation DD

Item number: 6065980



Straight connector for compensation of linear thermal expansion.



St Steel

DD Strip galvanised zinc/aluminium, Double Dip

Master data

Item number	6065980
Type	RDV 640 DD
Description 1	Expansion joint connector
Description 2	for cable trays, with screws
Manufacturer	OBO
Dimension	60x400x200
Material	Steel
Surface	Strip galvanised zinc/aluminium, Double Dip
Surface standard	DIN EN 10346
Smallest sales unit	2
Unit of quantity	Piece
Weight	129.6 kg
Weight unit	kg/100 pc.

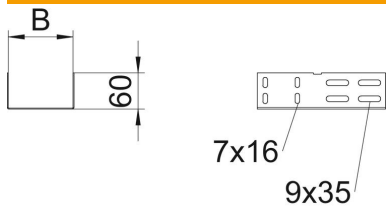
Technical data sheet

Connector for expansion compensation DD

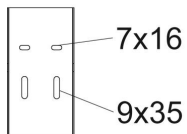


Item number: 6065980

Dimensions



Length	200 mm
Width	400 mm
Width	16 in
Height	57 mm
Height	2 in
Plate thickness	1.5 mm
Dimension B	400 mm
Dimension L	200 mm



Technical data

Version for	Straight connector
Maintain electrical functions	no
Suitable for mesh cable tray	no
Suitable for cable ladder	no
Suitable for cable tray	yes
Suitable for cable tray system height	60 mm
Adjustable connector, horizontal	no
Articulated connector, vertical	no
Rustproof steel, pickled	no
Connection type	Screw connector
Wide-span version	no