

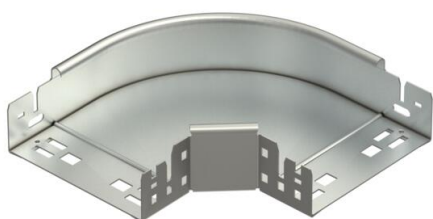
Technical data sheet

90° Magic bend 60 A4

Item number: 6041202



90° bend with quick connector system. For all cable tray types of 60 mm side height.



A4 Stainless steel

2B Bright, treated

Master data

Item number	6041202
Type	RBM 90 615 A4
Description 1	90° bend
Description 2	with quick connector
Manufacturer	OBO
Dimension	60x150
Material	Stainless steel
Surface	Bright, treated
Surface standard	
Smallest sales unit	1
Unit of quantity	Piece
Weight	91.9 kg
Weight unit	kg/100 pc.

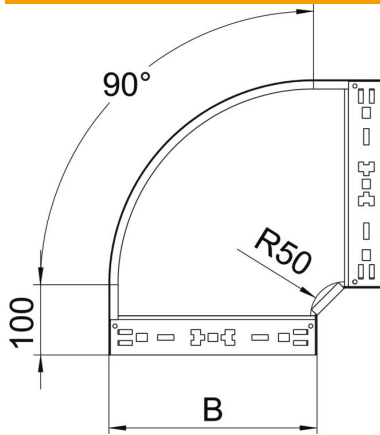
Technical data sheet

90° Magic bend 60 A4

Item number: 6041202



Dimensions



Width	150 mm
Height	60 mm
Plate thickness	1.25 mm
Dimension B	150 mm

Technical data

Bend (angle)	90°
Connector version	Integrated connector
Maintain electrical functions	yes
Mounting perforation in base	no
NATO hole pattern	no
Change of direction	Horizontal
Rustproof steel, pickled	no
Side perforation	no
Wide-span version	no
Type of connector, cable support system	Click fastening