

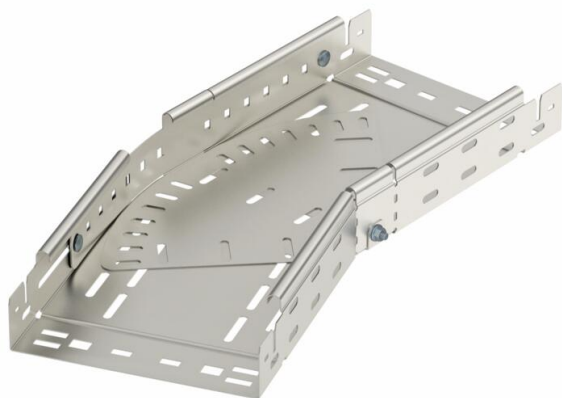
# Technical data sheet

## Magic bend, variable 60 A2

Item number: 6040530



Magic bend 0°–90°, variable, with quick connector system. For all cable tray types of 60 mm side height.



**A2** Stainless steel

**2B** Bright, treated

### Master data

Item number	6040530
Type	RBMV 650 A2
Description 1	Variable bend
Description 2	with quick connector
Manufacturer	OBO
Dimension	60x500
Material	Stainless steel
Surface	Bright, treated
Surface standard	
Smallest sales unit	1
Unit of quantity	Piece
Weight	986 kg
Weight unit	kg/100 pc.

### Dimensions

Width	500 mm
Height	60 mm
Plate thickness	1.5 mm
Dimension B	500 mm
Dimension L	960 mm

# Technical data sheet

Magic bend, variable 60 A2

Item number: 6040530



## Technical data

Bend (angle)	Adjustable
Connector version	Integrated connector
Maintain electrical functions	no
Mounting perforation in base	yes
NATO hole pattern	no
Change of direction	Horizontal
Rustproof steel, pickled	no
Side perforation	yes
Wide-span version	no
Type of connector, cable support system	Click fastening