

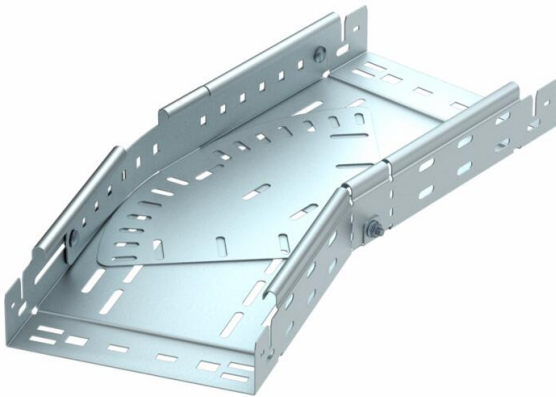
Technical data sheet

Magic bend, variable 60 FT

Item number: 6040504



Magic bend 0°–90°, variable, with quick connector system. For all cable tray types of 60 mm side height.



St Steel

FT Hot-dip galvanised

Master data

| | |
|---------------------|----------------------|
| Item number | 6040504 |
| Type | RBMV 620 FT |
| Description 1 | Variable bend |
| Description 2 | with quick connector |
| Manufacturer | OBO |
| Dimension | 60x200 |
| Material | Steel |
| Surface | Hot-dip galvanised |
| Surface standard | DIN EN ISO 1461 |
| Smallest sales unit | 1 |
| Unit of quantity | Piece |
| Weight | 179.5 kg |
| Weight unit | kg/100 pc. |

Technical data sheet

Magic bend, variable 60 FT

Item number: 6040504



Dimensions

| | |
|-----------------|---------|
| Width | 200 mm |
| Width | 8 in |
| Height | 60 mm |
| Height | 2 in |
| Plate thickness | 1 mm |
| Dimension B | 200 mm |
| Dimension L | 1.61 ft |
| Dimension L | 490 mm |

Technical data

| | |
|---|----------------------|
| Bend (angle) | Adjustable |
| Connector version | Integrated connector |
| Maintain electrical functions | yes |
| Mounting perforation in base | yes |
| NATO hole pattern | no |
| Change of direction | Horizontal |
| Rustproof steel, pickled | no |
| Side perforation | yes |
| Wide-span version | no |
| Type of connector, cable support system | Click fastening |