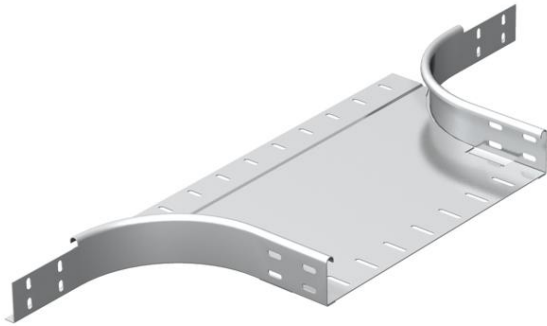


Technical data sheet

Add-on tee 60 A2

Item number: 7136269



Add-on tee for horizontal and vertical use. For all cable tray types of 60 mm side height.
Fastening materials should be ordered separately.



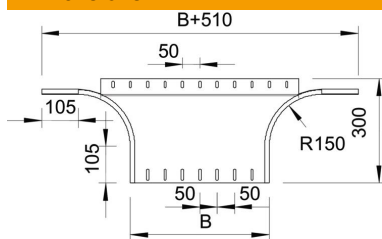
A2 Stainless steel

2B Bright, treated

Master data

Item number	7136269
Type	RAA 660 A2
Description 1	Add-on tee
Description 2	round version
Manufacturer	OBO
Dimension	60x600
Material	Stainless steel
Surface	Bright, treated
Surface standard	
Smallest sales unit	1
Unit of quantity	Piece
Weight	285 kg
Weight unit	kg/100 pc.

Dimensions



Width	600 mm
Width	24 in
Height	60 mm
Height	2 in
Plate thickness	1.5 mm
Dimension B	600 mm
Dimension R	150 mm

Technical data sheet

Add-on tee 60 A2

Item number: 7136269



Technical data

Bend (angle)	90°
Connector version	Without connectors
Maintain electrical functions	no
Material thickness, floor plate	1.5 mm
NATO hole pattern	no
Change of direction	Horizontal
Rustproof steel, pickled	no
Wide-span version	no
Type of connector, cable support system	Screwed
Rail thickness	1.25 mm