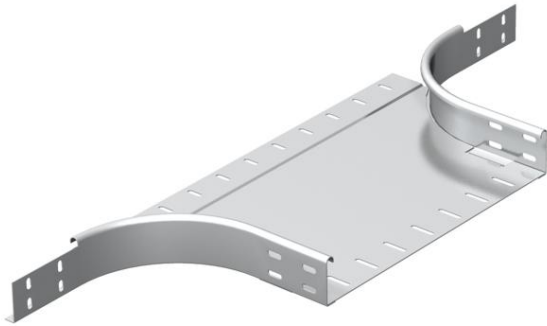


Technical data sheet

Mounting/branch piece 60 A4

Item number: 7136252



Add-on tee for horizontal and vertical use. For all cable tray types of 60 mm side height.
Fastening materials should be ordered separately.



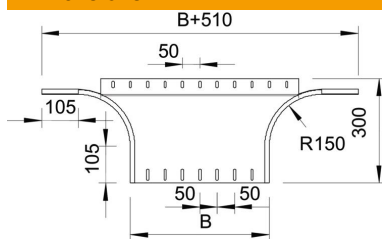
A4 Stainless steel

2B Bright, treated

Master data

Item number	7136252
Type	RAA 650 A4
Description 1	Add-on tee
Description 2	round version
Manufacturer	OBO
Dimension	60x500
Material	Stainless steel
Surface	Bright, treated
Surface standard	
Smallest sales unit	1
Unit of quantity	Piece
Weight	255 kg
Weight unit	kg/100 pc.

Dimensions



Width	500 mm
Width	20 in
Height	60 mm
Height	2 in
Dimension B	500 mm
Dimension R	150 mm

Technical data sheet

Mounting/branch piece 60 A4

Item number: 7136252



Technical data

Bend (angle)	90°
Connector version	Without connectors
Material thickness, floor plate	1.5 mm
Change of direction	Horizontal
Type of connector, cable support system	Screwed
Rail thickness	1.25 mm