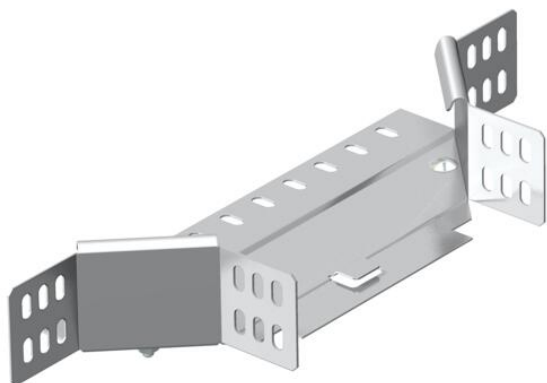


Technical data sheet

Add-on tee 60 A2

Item number: 7136141



Add-on tee for horizontal and vertical use. For all cable tray types of 60 mm side height.
The fitting is shipped in an unmounted state.
Including appropriate fastening material.



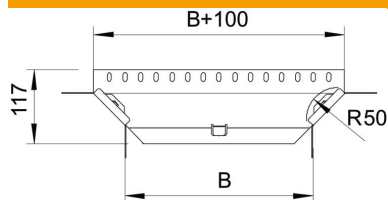
A2 Stainless steel

2B Bright, treated

Master data

Item number	7136141
Type	RAA 630 A2
Description 1	Add-on tee
Description 2	with 2 angle connectors
Manufacturer	OBO
Dimension	60x300
Material	Stainless steel
Surface	Bright, treated
Surface standard	
Smallest sales unit	1
Unit of quantity	Piece
Weight	61.5 kg
Weight unit	kg/100 pc.

Dimensions



Width	300 mm
Width	12 in
Height	60 mm
Height	2 in
Plate thickness	1 mm
Dimension B	300 mm
Dimension R	50 mm

Technical data sheet

Add-on tee 60 A2

Item number: 7136141



Technical data

Bend (angle)	90°
Connector version	Supplied connectors
Maintain electrical functions	no
Material thickness, floor plate	1 mm
NATO hole pattern	no
Change of direction	Horizontal
Rustproof steel, pickled	no
Wide-span version	no
Type of connector, cable support system	Screwed
Rail thickness	1.25 mm