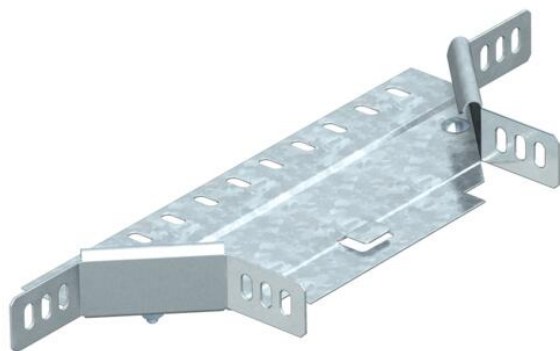


Technical data sheet

Add-on tee 35 FT

Item number: 7120140



Add-on tee for horizontal and vertical use. For all cable tray types of 35 mm side height.
The fitting is shipped in an unmounted state.
Including appropriate fastening material.



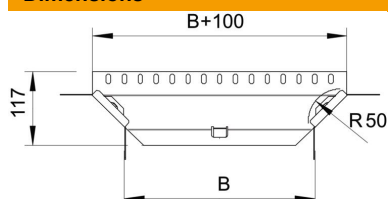
St Steel

FT Hot-dip galvanised

Master data

Item number	7120140
Type	RAA 315 FT
Description 1	Add-on tee
Description 2	with 2 angle connectors
Manufacturer	OBO
Dimension	35x150
Material	Steel
Surface	Hot-dip galvanised
Surface standard	DIN EN ISO 1461
Smallest sales unit	1
Unit of quantity	Piece
Weight	39.7 kg
Weight unit	kg/100 pc.

Dimensions



Width	150 mm
Width	6 in
Height	35 mm
Height	1 in
Dimension B	150 mm
Dimension R	50 mm

Technical data sheet

Add-on tee 35 FT

Item number: 7120140



Technical data

Bend (angle)	90°
Connector version	Supplied connectors
Maintain electrical functions	no
Material thickness, floor plate	1 mm
NATO hole pattern	no
Change of direction	Horizontal
Rustproof steel, pickled	no
Wide-span version	no
Type of connector, cable support system	Screwed
Rail thickness	1.25 mm