

Technical data sheet

MS4022 mounting rail, heavy-duty, slot 18 mm, FT

Item number: 6007260



MS4022 profile rail for use as rung in heavy-duty ladders.
Maximum rung load 175 kg.
The appropriate clamp clip is type 2056U.



- St** Steel
- FT** Hot-dip galvanised

Master data

Item number	6007260
Type	MS4022P0692FT
Description 1	Profile rail
Description 2	for U-support
Manufacturer	OBO
Dimension	692x40x22,5
Material	Steel
Surface	Hot-dip galvanised
Surface standard	DIN EN ISO 1461
Smallest sales unit	1
Unit of quantity	Piece
Weight	113 kg
Weight unit	kg/100 pc.

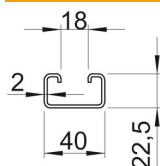
Technical data sheet

MS4022 mounting rail, heavy-duty, slot 18 mm, FT

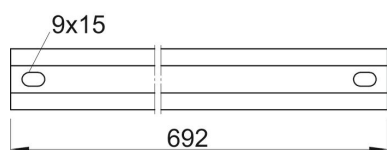
Item number: 6007260



Dimensions



lampDimension WxH	40x22,5 mm
Length	692 mm
Width	40 mm
Height	22.5 mm



Technical data

Type of perforation	Perforated back
Version for	Single profile
Material thickness	2 mm
Profile shape	C profile
Slot width	18 mm