

# Technical data sheet

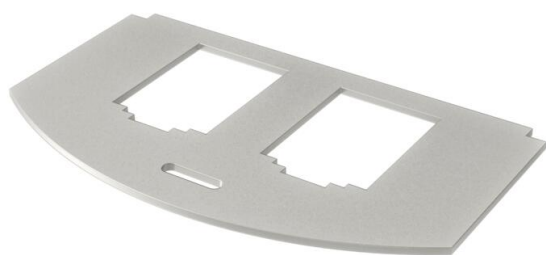
## Mounting plate for data technology, type B

Item number: 7408804



Mounting plate to accept two connection modules for data connection modules of the following types BTR: E-DAT; Dätwyler: MS and MS-N; Kerpen: VarioKeystone.

Dimensions of a mounting opening in mm: 19.35/21.55 x 14.85.

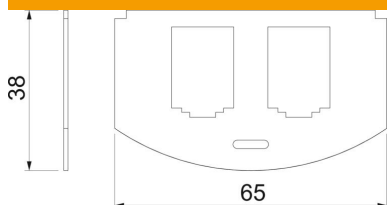


**A2** Stainless steel

### Master data

Item number	7408804
Type	MP R2 2B
Description 1	Mounting plate for GES R2
Description 2	for 2x Typ B
Manufacturer	OBO
Material	Stainless steel
Smallest sales unit	1
Unit of quantity	Piece
Weight	1.94 kg
Weight unit	kg/100 pc.

### Dimensions



Length	65 mm
Width	36 mm

# Technical data sheet

## Mounting plate for data technology, type B

Item number: 7408804



### Technical data

Application	Mounting box
Number of CEE/Perilex openings	0
Number of triple openings	0
Number of installable devices	2
Number of single openings	2
Number of oval openings	0
Number of square openings	0
Number of round openings	0
Number of double openings	0
Fastening type	Lockable
Labelling panel	no
Blanking lid	no
Suitable for labelling panel	no
Device type	Miscellaneous
Installation technology	Miscellaneous