

# Technical data sheet

## Cable tray MKS-Magic® 85 FS

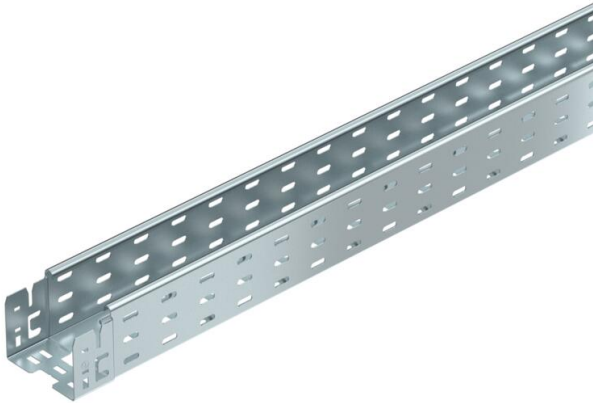
Item number: 6059080



Cable tray with integrated quick fastening system. The usable length of the cable tray is 3,000 mm.

The cable tray has continuous side perforations of 7 x 20 mm for the installation of additional connection and mounting components.

From a cable tray width of 200 mm with 30% hole surface, suitable for use under sprinkler systems according to VdS guideline 2092. Continuous equipotential bonding is guaranteed without additional components.



**St** Steel

**FS** Strip galvanized

### Master data

|                     |                             |
|---------------------|-----------------------------|
| Item number         | 6059080                     |
| Type                | MKSM 810 FS                 |
| Description 1       | Cable tray MKSM             |
| Description 2       | perforated, quick connector |
| Manufacturer        | OBO                         |
| Dimension           | 85x100x3050                 |
| Material            | Steel                       |
| Surface             | Strip galvanized            |
| Surface standard    | DIN EN 10346                |
| Smallest sales unit | 3                           |
| Unit of quantity    | Metre                       |
| Weight              | 200 kg                      |
| Weight unit         | kg/100 m                    |

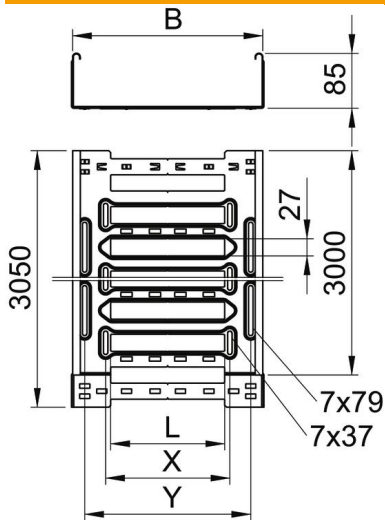
# Technical data sheet

## Cable tray MKS-Magic® 85 FS

Item number: 6059080



### Dimensions



|                 |          |
|-----------------|----------|
| Length          | 3,050 mm |
| Width           | 100 mm   |
| Height          | 85 mm    |
| Plate thickness | 1 mm     |
| Dimension B     | 100 mm   |
| Dimension L     | 30 mm    |
| Dimension y     | 62 mm    |

### Technical data

|  |                      |
|--|----------------------|
| Connector version                        | Integrated connector |
| Mounting system fastening type           | Floor Ceiling Wall   |
| Walkable                                 | no                   |
| Maintain electrical functions            | no                   |
| With cover                               | no                   |
| Mounting perforation in base             | yes                  |
| NATO hole pattern                        | no                   |
| Usable cross-section                     | 83 cm <sup>2</sup>   |
| Usable cross-section                     | 8300 mm <sup>2</sup> |
| Rustproof steel, pickled                 | no                   |
| Side perforation                         | yes                  |
| Wide-span version                        | no                   |
| Magnetic shield insulation with cover    | 50 dB                |
| Magnetic shield insulation without cover | 20 dB                |
| Load test type according to IEC 61537    | Type II              |
| Usable length                            | 3000 mm              |
| Type of connector, cable support system  | Click fastening      |

# Technical data sheet

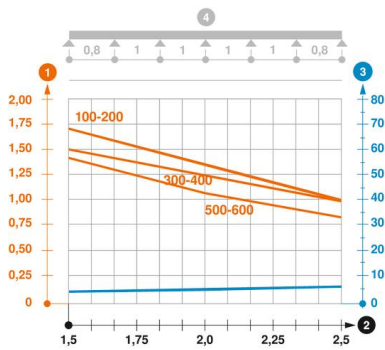
## Cable tray MKS-Magic® 85 FS

Item number: 6059080



### Loads

|                                   |           |
|-----------------------------------|-----------|
| Insertable support spacings, min. | 1.5 m     |
| Insertable support spacings, max. | 2.5 m     |
| NEMA load class                   | 8A        |
| Support spacing 1.5 m             | 1.7 kN/m  |
| Support spacing 2.0 m             | 1.35 kN/m |
| Support spacing 2.5 m             | 1 kN/m    |



### Load diagram, cable tray, type MKSM 85

- 1 Permitted cable tray/ladder load in kN/m without man load
- 2 Support width in m
- 3 Rail bend in mm at permitted kN/m
- 4 Load scheme during testing
- Load curve with cable tray/ladder width in mm
- Strut bend curve according to support width