

Technical data sheet

Centre suspension mesh cable tray FS

Item number: 6015220



Two-part centre suspension of mesh cable trays.
When filling with cables, please ensure an even distribution. The maximum recommended mesh cable tray width is 200 mm.



- St** Steel
- FS** Strip galvanized

Master data

Item number	6015220
Type	GMA M6 FS
Description 1	Centre suspension
Description 2	for threaded rod M6
Manufacturer	OBO
Dimension	60x40
Material	Steel
Surface	Strip galvanized
Surface standard	DIN EN 10346
Smallest sales unit	25
Unit of quantity	Piece
Weight	8 kg
Weight unit	kg/100 pc.

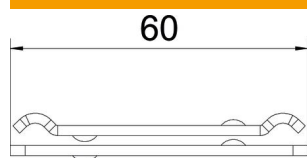
Technical data sheet

Centre suspension mesh cable tray FS

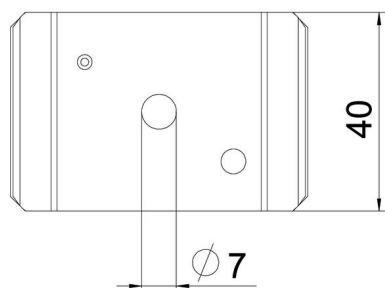
Item number: 6015220



Dimensions



Length	65 mm
Width	40 mm
Height	10.1 mm



Technical data

Version for	Suspended
Maintain electrical functions	no
Hole diameter	7 mm
Adjustable	no