

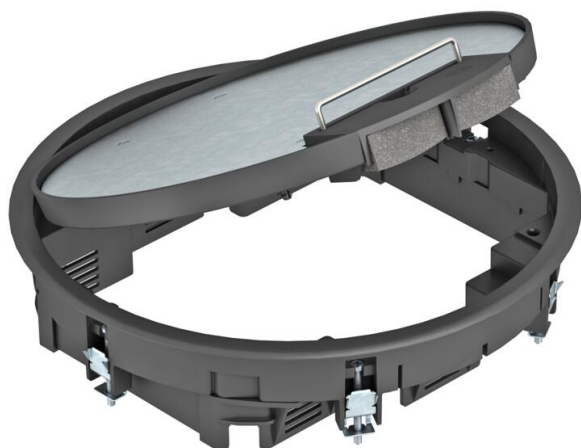
Technical data sheet

GESR7 service outlet with handle clamp

Item number: 7405456



Service outlet with handle clamp for up to 10 individual Modul 45 devices in 2 UT3 and one UT4 universal support, use in duct systems and system floors for indoor use.
Up to 7 installation devices with 50 mm central plate can be inserted.



PA Polyamide

Master data

Item number	7405456
Type	GESR7 10U 9011
Description 1	Service outlet
Description 2	for universal mounting
Manufacturer	OBO
Dimension	Ø294x66
Colour	Graphite black; RAL 9011
Material	Polyamide
Smallest sales unit	1
Unit of quantity	Piece
Weight	250.5 kg
Weight unit	kg/100 pc.

Technical data

Number of installable devices	10
Number of mounting boxes	3
Version for	Round
Cable outlet version	Swivellable cord outlet
Floor covering protection frame	yes
Floor care	Dry
Seal installation option	no

Technical data sheet

GESR7 service outlet with handle clamp

Item number: 7405456



Technical data

Floor height, min.	78 mm
Suitable for raised floor installation	yes
Suitable for screed-flush closed underfloor ducts	yes
Suitable for screed-covered underfloor ducts	yes
Suitable for cavity floor installation	yes
Suitable for wet care	no
Suitable for underfloor box	350
Suitable for underfloor ducts	yes
Device support to accept mounting boxes	yes
With floor covering recess	yes
Nominal size for device installation units	R7
Frame version	Carpet protection frame
Protection rating (IP) when used	IP20
Protection rating (IP) when unused	IP40
Protection rating IK code	IK08
Heavy-duty version	no
Installation system type	UT3 / UT4
Vertical load, large area	to 5,000 N
Vertical load, small area	to 3,000 N
Approvals	VDE
Opening mechanism	Handle
Floor covering thickness	5 mm