

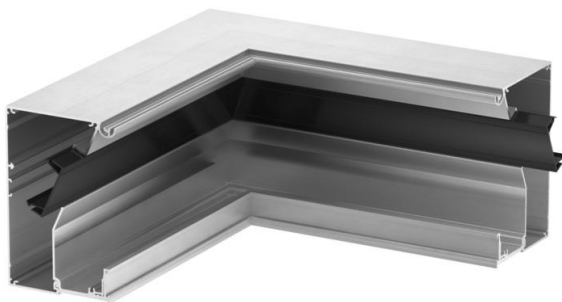
# Technical data sheet

## Internal corner, design trunking

Item number: 6115795



Internal corner base to create a design device installation trunking of the GAD series. 45 mm system opening for acceptance of Modul 45 switch and connection devices and appropriate PVC and aluminium covers of the Rapid 45 series. The fitting can be completed with fitting covers in the "Swing", "Soft" or "Style" design. The GAD OTA cover adapters are essential. A GAD OTD spacer must be placed between the trunking covers. Standard version in anodised aluminium, different decoration on request.



**Alu** Aluminium

**EL** Anodised

### Master data

Item number	6115795
Type	GAD IEL
Description 1	Internal corner, Design duct
Description 2	without cover
Manufacturer	OBO
Dimension	114x140x300
Material	Aluminium
Surface	Anodised
Surface standard	
Smallest sales unit	1
Unit of quantity	Piece
Weight	183 kg
Weight unit	kg/100 pc.

# Technical data sheet

## Internal corner, design trunking

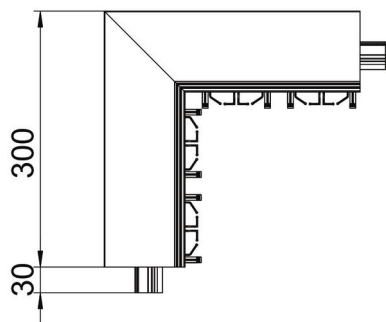
Item number: 6115795



### Dimensions



Length	300 mm
Width	140 mm
Height	114 mm



### Technical data

Number of covers	1
Version for	Base
Shape	Asymmetrical
Halogen-free	yes
Cable retaining clip	no
Duct connector	no
Cover mounting type	Cross-over
Mounting perforation in base	no
Cover width	140 mm
Protective film	yes
Angle range, min.	90 mm