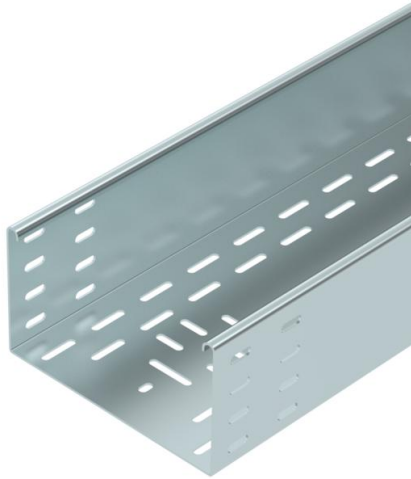


# Technical data sheet

## Cable tray BKRS 110 FS

Item number: 6061983



Heavy-duty, walkable cable tray system BKRS with base perforation, in 110 mm side height.

The cable tray has connector perforations on both sides. Straight connectors should be ordered separately and in the appropriate quantity.

Magnetic shield insulation without cover 20 dB, with cover 50 dB.



- St** Steel
- FS** Strip galvanized

### Master data

|                     |                  |
|---------------------|------------------|
| Item number         | 6061983          |
| Type                | BKRS 1120 FS     |
| Description 1       | Cable tray BKRS  |
| Description 2       | walkable         |
| Manufacturer        | OBO              |
| Dimension           | 110x200x3000     |
| Material            | Steel            |
| Surface             | Strip galvanized |
| Surface standard    | DIN EN 10346     |
| Smallest sales unit | 3                |
| Unit of quantity    | Metre            |
| Weight              | 659.9 kg         |
| Weight unit         | kg/100 m         |

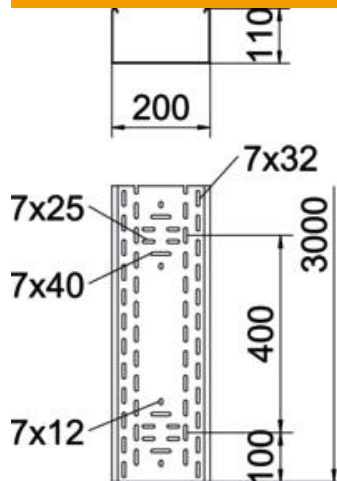
# Technical data sheet

## Cable tray BKRS 110 FS

Item number: 6061983



### Dimensions



|                 |          |
|-----------------|----------|
| Length          | 3,000 mm |
| Length          | 10 ft    |
| Width           | 200 mm   |
| Width           | 8 in     |
| Height          | 110 mm   |
| Height          | 4 in     |
| Plate thickness | 0.08 in  |
| Plate thickness | 2 mm     |
| Dimension B     | 200 mm   |
| Dimension H     | 110 mm   |
| Dimension L     | 3,000 mm |

### Technical data

|   |                       |
|---|-----------------------|
| Connector version                       | Without connectors    |
| Mounting system fastening type          | Floor                 |
| Walkable                                | yes                   |
| Maintain electrical functions           | no                    |
| With cover                              | no                    |
| Mounting perforation in base            | yes                   |
| NATO hole pattern                       | no                    |
| Usable cross-section                    | 196 cm <sup>2</sup>   |
| Usable cross-section                    | 19600 mm <sup>2</sup> |
| Rustproof steel, pickled                | no                    |
| Side perforation                        | no                    |
| Wide-span version                       | no                    |
| Load test type according to IEC 61537   | Type II               |
| Type of connector, cable support system | Screwed               |

### Loads

|                                   |           |
|-----------------------------------|-----------|
| Insertable support spacings, min. | 1.5 m     |
| Insertable support spacings, max. | 3 m       |
| Support spacing 1.5 m             | 5.07 kN/m |
| Support spacing 2.0 m             | 4.75 kN/m |
| Support spacing 2.5 m             | 2.73 kN/m |
| Support spacing 3.0 m             | 2 kN/m    |