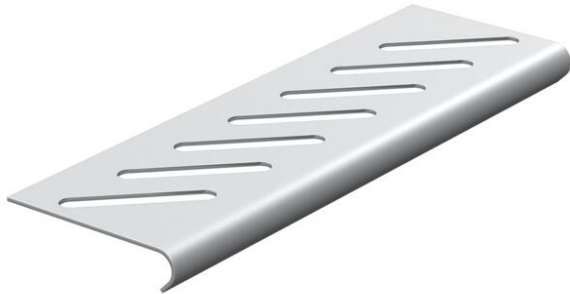


Technical data sheet

Bottom end plate A4

Item number: 7084151



For base reinforcement at the ends of the tray and as cable protection.
For fastening, please order screws, type FRSB M6x12, separately.



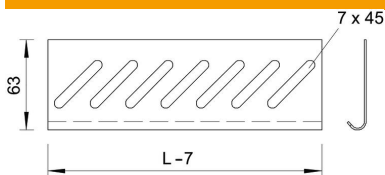
A4 Stainless steel

2B Bright, treated

Master data

| | |
|---------------------|------------------|
| Item number | 7084151 |
| Type | BEB 600 A4 |
| Description 1 | Bottom end plate |
| Description 2 | for cable tray |
| Manufacturer | OBO |
| Dimension | B600mm |
| Material | Stainless steel |
| Surface | Bright, treated |
| Surface standard | |
| Smallest sales unit | 1 |
| Unit of quantity | Piece |
| Weight | 28.4 kg |
| Weight unit | kg/100 pc. |

Dimensions



| | |
|-------------|--------|
| Width | 600 mm |
| Height | 35 mm |
| Dimension B | 600 mm |

Technical data

| | |
|-------------------------------|----|
| Maintain electrical functions | no |
| Rustproof steel, pickled | no |
| Wide-span version | no |