

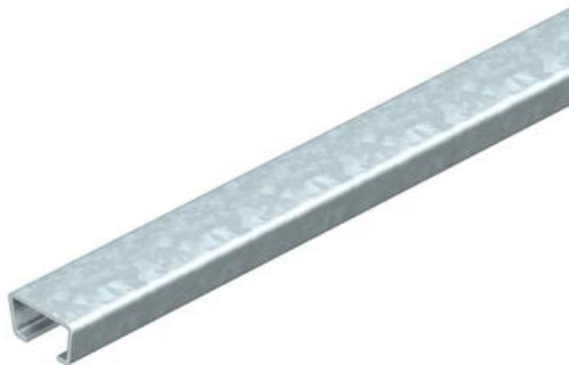
Technical data sheet

AMS3518 anchor rail, slot 16.5 mm, FT, unperforated

Item number: 1112228



Central C profile rail for cable routing, in conjunction with clamp clips with a hammerhead foot. Can also be used as suspension construction for cable support systems.



St Steel

FT Hot-dip galvanised

Master data

Item number	1112228
Type	AMS3518UP2000FT
Description 1	Profile rail
Description 2	unperforated, slot 16.5mm
Manufacturer	OBO
Dimension	2000x35x18
Material	Steel
Surface	Hot-dip galvanised
Surface standard	DIN EN ISO 1461
Smallest sales unit	2
Unit of quantity	Metre
Weight	121.35 kg
Weight unit	kg/100 m

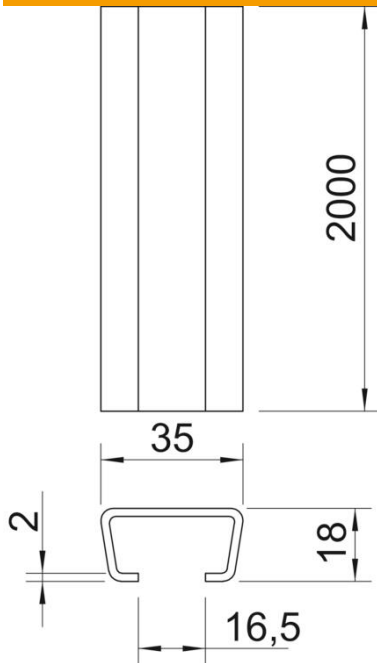
Technical data sheet

AMS3518 anchor rail, slot 16.5 mm, FT, unperforated



Item number: 1112228

Dimensions



Length	2,000 mm
Width	35 mm
Height	18 mm
Dimension L	2,000 mm

Technical data

Breakable	no
Type of perforation	Without
Version for	Single profile
Bundle	20 m
Maintain electrical functions	no
Material thickness	2 mm
With perforation	no
With tothing	no
Profile shape	C profile
Slot width	16.5 mm
Static value A	1.48 cm ²
Static value Iy	0.6 cm
Static value Iz	2.33 cm
Static value Wy	0.54 cm ²
Static value Wz	1.33 cm ²