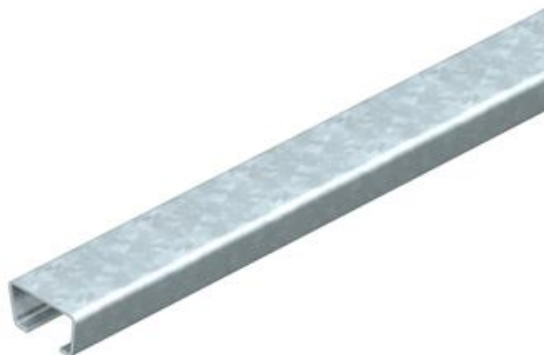


# Technical data sheet

AML3518 anchor rail, slot 16.5 mm, FT, unperforated

Item number: 1118153



Central C profile rail for cable routing, in conjunction with clamp clips with a hammerhead foot. Can also be used as suspension construction for cable support systems.



**St** Steel

**FT** Hot-dip galvanised

## Master data

Item number	1118153
Type	AML3518UP6000FT
Description 1	Profile rail
Description 2	unperforated, slot 16.5mm
Manufacturer	OBO
Dimension	6000x35x18
Material	Steel
Surface	Hot-dip galvanised
Surface standard	DIN EN ISO 1461
Smallest sales unit	6
Unit of quantity	Metre
Weight	94.84 kg
Weight unit	kg/100 m

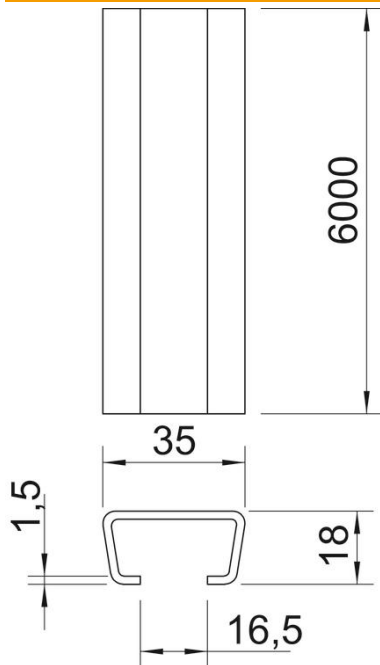
# Technical data sheet

AML3518 anchor rail, slot 16.5 mm, FT, unperforated



Item number: 1118153

## Dimensions



Length	6,000 mm
Width	35 mm
Height	18 mm
Dimension L	6,000 mm

## Technical data

Breakable	no
Type of perforation	Without
Version for	Single profile
Bundle	6 m
Maintain electrical functions	no
Material thickness	1.5 mm
With perforation	no
With tothing	no
Profile shape	C profile
Slot width	16.5 mm
Static value A	1.14 cm <sup>2</sup>
Static value I <sub>y</sub>	0.49 cm
Static value I <sub>z</sub>	0.85 cm
Static value W <sub>y</sub>	0.44 cm <sup>2</sup>
Static value W <sub>z</sub>	1.05 cm <sup>2</sup>