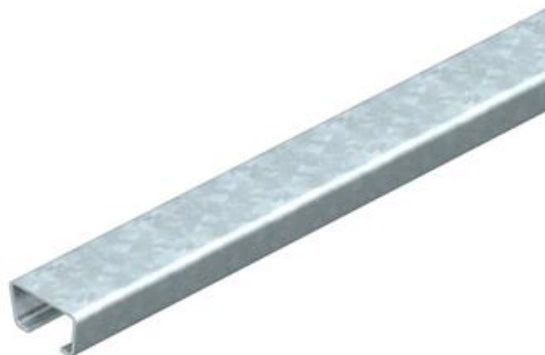


Technical data sheet

AML3518 anchor rail, slot 16.5 mm, unperforated

Item number: 1118021



Central C profile rail for cable routing, in conjunction with clamp clips with a hammerhead foot. Can also be used as suspension construction for cable support systems.



St Steel

BK Bright

Master data

Item number	1118021
Type	AML3518UP2000BK
Description 1	Profile rail
Description 2	unperforated, slot 16.5mm
Manufacturer	OBO
Dimension	2000x35x18
Material	Steel
Surface	Bright
Surface standard	
Smallest sales unit	2
Unit of quantity	Metre
Weight	90 kg
Weight unit	kg/100 m

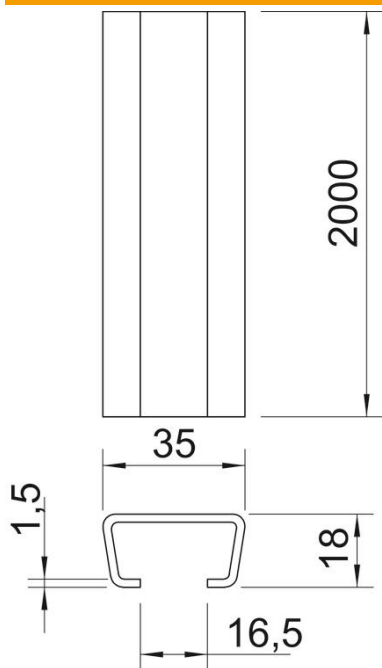
Technical data sheet

AML3518 anchor rail, slot 16.5 mm, unperforated

Item number: 1118021



Dimensions



Length	2,000 mm
Width	35 mm
Height	18 mm
Dimension L	2,000 mm

Technical data

Breakable	no
Type of perforation	Without
Version for	Single profile
Bundle	20 m
Maintain electrical functions	no
Material thickness	1.5 mm
With perforation	no
With tothing	no
Profile shape	C profile
Slot width	16.5 mm
Static value A	1.14 cm ²
Static value I _y	0.49 cm
Static value I _z	0.85 cm
Static value W _y	0.44 cm ²
Static value W _z	1.05 cm ²