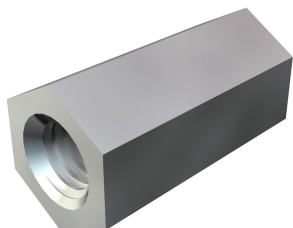


Technical data sheet

Spacer sleeve

Item number: 3415031



Continuous internal thread.

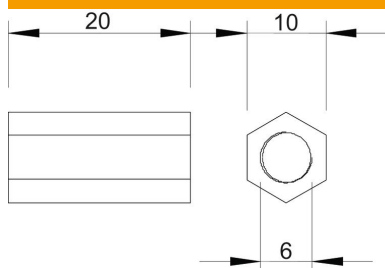
CE

- Zn** Die-cast zinc
- G** Electrogalvanized

Master data

| | |
|---------------------|----------------------------|
| Item number | 3415031 |
| Type | 965 M6X20 G |
| Description 1 | Spacer sleeve |
| Manufacturer | OBO |
| Dimension | M6x20mm |
| Material | Die-cast zinc |
| Surface | Electrogalvanized |
| Surface standard | EN ISO 19598 / EN ISO 4042 |
| Smallest sales unit | 100 |
| Unit of quantity | Piece |
| Weight | 0.9 kg |
| Weight unit | kg/100 pc. |

Dimensions



| | |
|---------------------|-------|
| Length | 20 mm |
| Dimension 1, metric | 6 |
| Dimension 2, metric | 6 |
| Dimension L | 20 mm |

Technical data sheet

Spacer sleeve

Item number: 3415031



Technical data

| | |
|-------------------|-----------|
| Continuous thread | yes |
| Shape | Hexagonal |
| Thread | M6 |
| WAF | 10 |
| Hexagonal | yes |