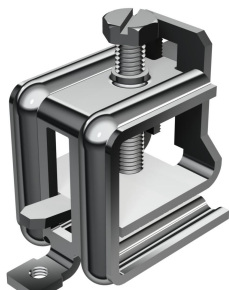


Technical data sheet

Beam clamp for screwing on, light-duty

Item number: 1408534



For rapid fastening on steel profiles during the mounting of cable tracks, clamp clips, luminaire suspensions, etc. A complete system consists of two beam clamps and a piece of C profile rail of any length, as well as two end caps.



St Steel

G Electrogalvanized

Master data

Item number	1408534
Type	339 2
Description 1	Carrier screw clamp
Description 2	heavyweight design
Manufacturer	OBO
Dimension	6-34mm
Material	Steel
Surface	Electrogalvanized
Surface standard	EN ISO 19598 / EN ISO 4042
Smallest sales unit	5
Unit of quantity	Pair
Weight	37 kg
Weight unit	kg/100 pairs

Technical data

Fastening type	Bolts
Flange thickness F max.	34 mm
Flange thickness F min.	6 mm
Hinge, adjustable	no
Hinged	no