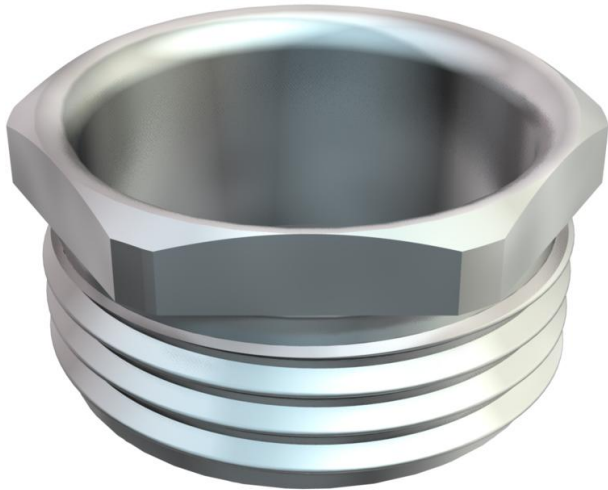


# Technical data sheet

## Pressure screw, PG thread

Item number: 2084112



Pressure screw (Part 3) in accordance with DIN 46320, with Pg thread to DIN EN 40430.

\* Prices according to DEL notation.

CE Pg

**CuZn**  
37 Brass

**N** Nickel-plated

### Master data

Item number	2084112
Type	164 MS PG-11
Description 1	Pressure screw
Manufacturer	OBO
Dimension	PG11
Material	Brass
Surface	Nickel-plated
Surface standard	
Smallest sales unit	100
Unit of quantity	Piece
Weight	0.59 kg
Weight unit	kg/100 pc.

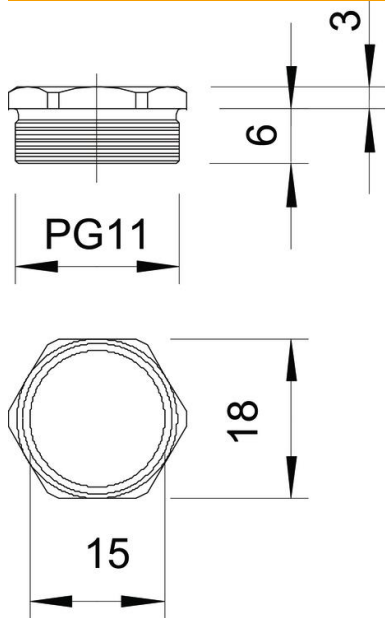
# Technical data sheet

## Pressure screw, PG thread

Item number: 2084112



### Dimensions



Dimension D	15 mm
Dimension E	20 mm
Dimension L1	6 mm
Dimension L2	3 mm

### Technical data

Thread type	PG
Thread length	6 mm
Nominal thread size	11
Thread increase	1.41 mm
Fibre-glass reinforced	no
Halogen-free	no
Impact-resistant	no
WAF	18
Strain relief option	no